



TELEDYNE
MONITOR LABS
 Everywhere you look™



N SERIES INSTRUMENTS

with NumaView™ Software

DESIGNED TO MEET THE RIGOROUS
 DEMANDS OF CONTINUOUS
 EMISSIONS MONITORING



**NO_x, CO, CO₂, O₂, SO₂, AND THC/NMHC/CH₄
 EXTRACTIVE GAS ANALYZERS**



WWW.TELEDYNE-ML.COM



+1 303.792.3300

35 INVERNESS DRIVE EAST, ENGLEWOOD, CO 80112

© 2022 Teledyne Monitor Labs. All rights reserved.

SIMPLE OPERATION AND INTEGRATION



Two front panel USB ports

Capacitive touch screen, full color display

Indicator illuminated soft power button



Rugged, compression bulkhead fittings for pneumatic connections

Digital I/O and Analog Output Expansion Cards (optional)

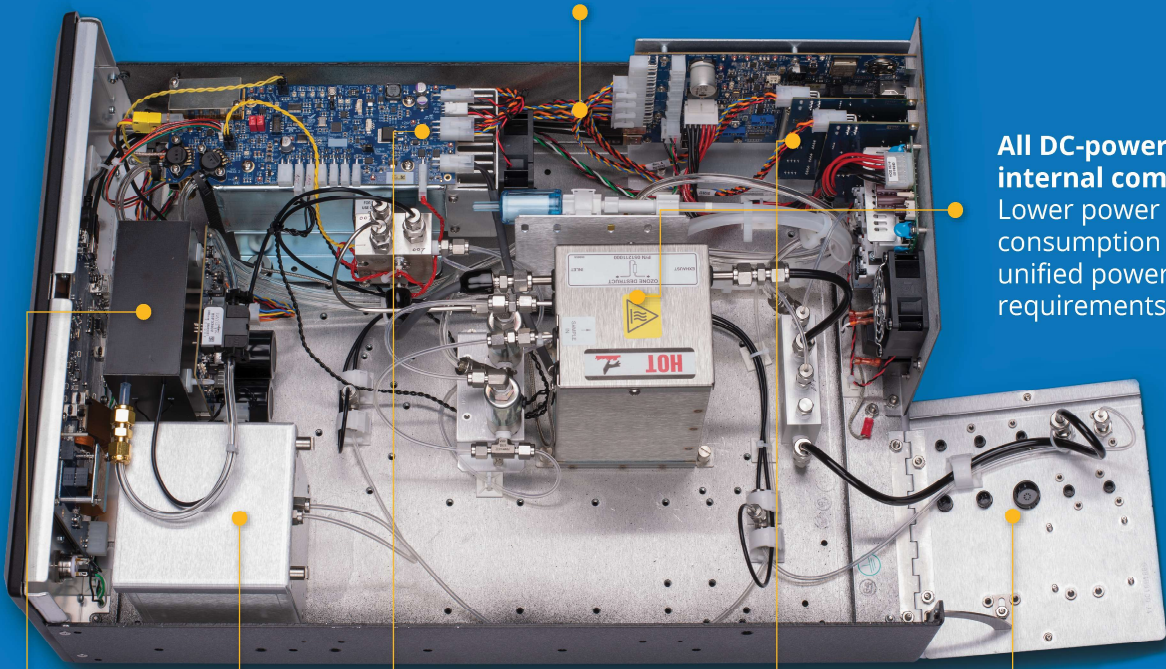
TCP/IP Ethernet and Serial Port with Modbus communications protocol (Standard)

Gas	Model	Ranges (Min / Max)
SO ₂ (Sulfur Dioxide)	N100	0-50 ppb / 0-20 ppm
SO ₂	N100H	0-10 ppm / 0-5,000 ppm
NO, NO ₂ , NO _x (Nitrogen Oxide, Nitrogen Dioxide)	N200	0-50 ppb / 0-20 ppm
NO, NO ₂ , NO _x	N200M	0-1 ppm / 0-200 ppm
NO, NO ₂ , NO _x	N200H	0-5 ppm / 0-5,000 ppm
CO (Carbon Monoxide)	N300	0-1 ppm / 0-1,000 ppm
CO	N300M	0-5 ppm / 0-5,000 ppm
CO ₂ (Carbon Dioxide)	N360	0-2 ppm / 0-2,000 ppm
CO ₂	N360M	0-4 ppm / 0-4,000 ppm

Integrated paramagnetic O₂ and/or NDIR CO₂ sensors available for some models.

MAINTENANCE-FRIENDLY DESIGN

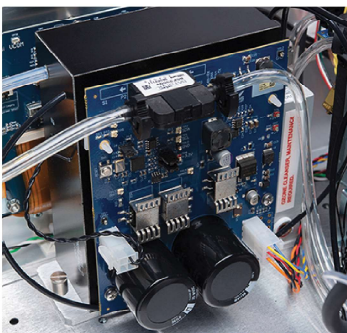
CAN Bus internal communications architecture
Simplified cabling with fewer connections improves reliability



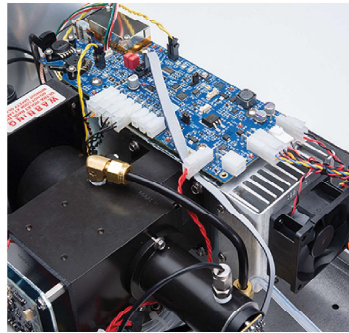
All DC-powered internal components
Lower power consumption and unified power requirements

Integrated paramagnetic O₂ and/or NDIR CO₂ sensors (optional)
Saves system integration space and cost

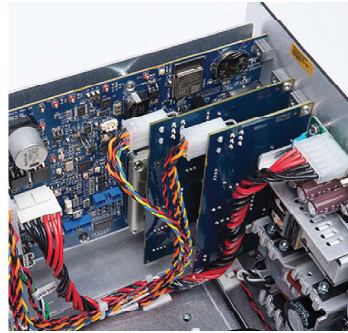
Split fold-down rear panel
Easy access to internal pneumatic connections



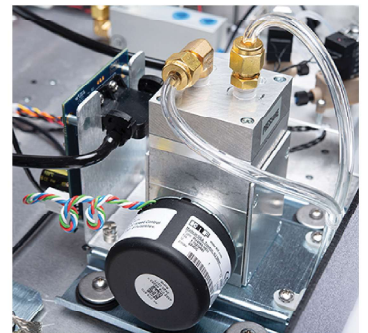
Ozone Generator Module



Sensor Module



Electronics and Communications Modules



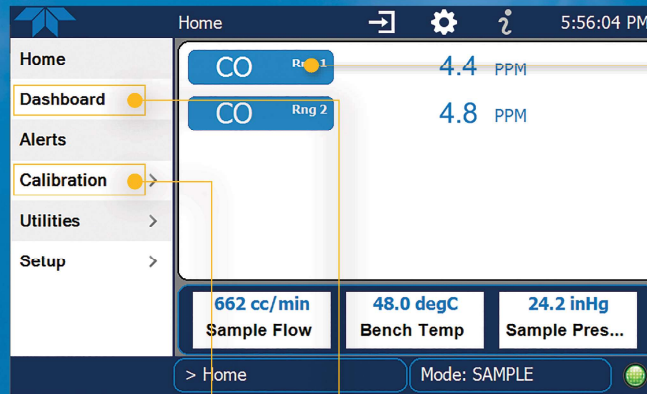
Flow System Module
(Available on select instrument models)

Modular internal hardware design
Easy field replacement with pre-calibrated and tested modules

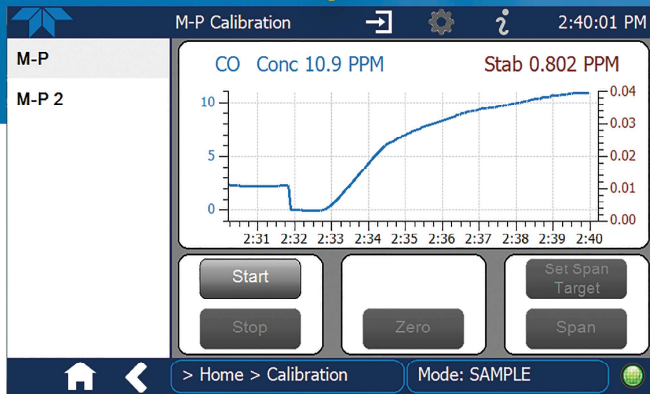
NUMAVIEW™ SOFTWARE

FOR TODAY'S MONITORING NEEDS.

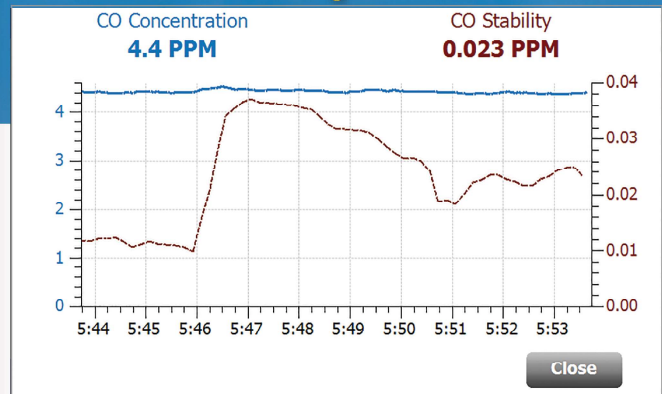
Customize the interface to control what you see and what it brings to your attention



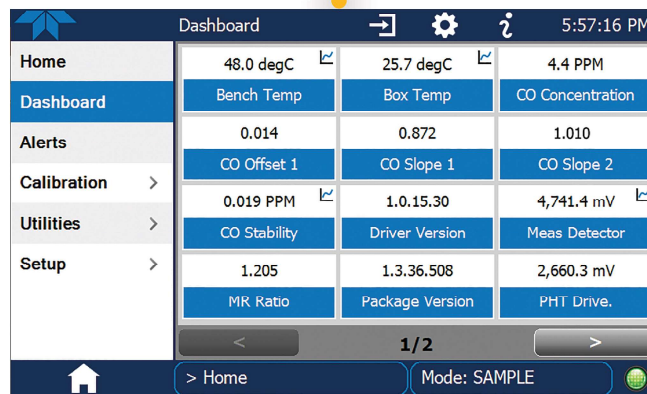
Record vital instrument parameters using new Health Status Report to USB in seconds



Graphical Zero and Span Calibrations



One-touch graphing tools provide instant results



Customizable dashboard gets you all the information you need with one touch

- ▶ Fully customizable, capacitive touch screen display with scrolling capability
- ▶ Programmable quick-view meter variables and test functions
- ▶ Real-time graphical representation of any dynamic parameter
- ▶ Fully customizable alerts and datalogging events
- ▶ Remote access and control using NumaView™ Remote Software*
- ▶ Ability to view graphs of historical logged data on the screen
- ▶ Simple and intuitive calibration functions
- ▶ Fully functional USB utility for both uploading and downloading data
- ▶ On-demand instrument health status report
- ▶ Multiple language support

EXCEPTIONAL TECHNICAL SUPPORT

» Instrument training (in-person or webinar-based)

Basic Training

Theory of operation, menu structure, maintenance, and calibrations.

Advanced Training

In-depth theory of operation and pneumatic and electronic troubleshooting with hands-on labs.

Customized Training

Tailored to your specific instrument and application needs and offered in-person at our factory in San Diego or at your facility, or remotely via webinar.

» Factory repairs

» Field service and maintenance

» Web-based customer support tools

Self-service access to software downloads, service notes and other resources.


» Free, expert technical support by telephone and email for the lifetime of the instrument





CONTACT US!

 WWW.TELEDYNE-ML.COM

 +1 303.792.3300

 GOTML@TFLFDYNF.COM

 35 INVERNESS DRIVE EAST
ENGLEWOOD, CO 80112



For more information on Teledyne Monitor Labs instruments, visit our website at:

WWW.TELEDYNE-ML.COM

© 2022 Teledyne Monitor Labs
Printed documents are uncontrolled.
Rev-A 03.01.22



Intertek